

10/29/2021 8:35:50 AM
J:\21103 Madison County Shooting Range\10 Drawings, Models\01 Working\21103 Madison County Shooting Range.rvt



General Site Notes

1. All paving and grades at perimeter of building to have positive slope away from structures and towards drainage basins.
2. All grassed areas shall be graded to drain to the appropriate inlet or slope to ensure positive drainage away from the building.
3. Slope all finish grades away from the building to provide drainage away from the structure.

DALE
PARTNERS

Architecture
Interiors
Planning

One Jackson Place
Suite 250
188 East Capitol Street
Jackson, MS 39201
p 601.352.5411

161 Lameuse Street
Suite 201
Biloxi, MS 39530
p 228.374.1409

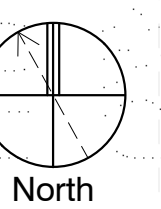
dalepartners.com

Madison County Shooting Range

Flora, MS

Schematic
Design

Project No	21103
Date	29 October, 2021
Drawn	CSI
Checked	RBu
Revisions	Rev Date

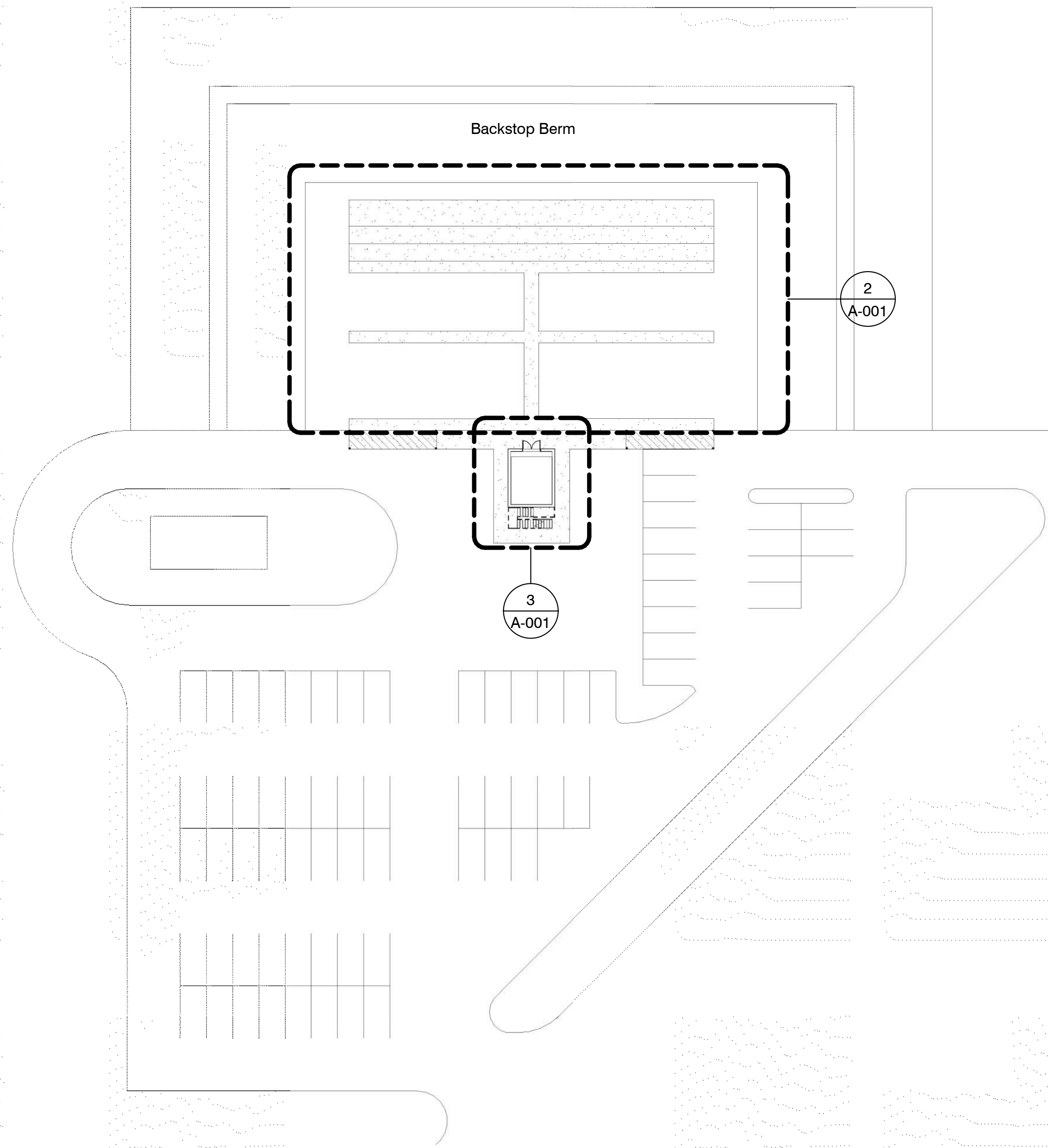


AS101

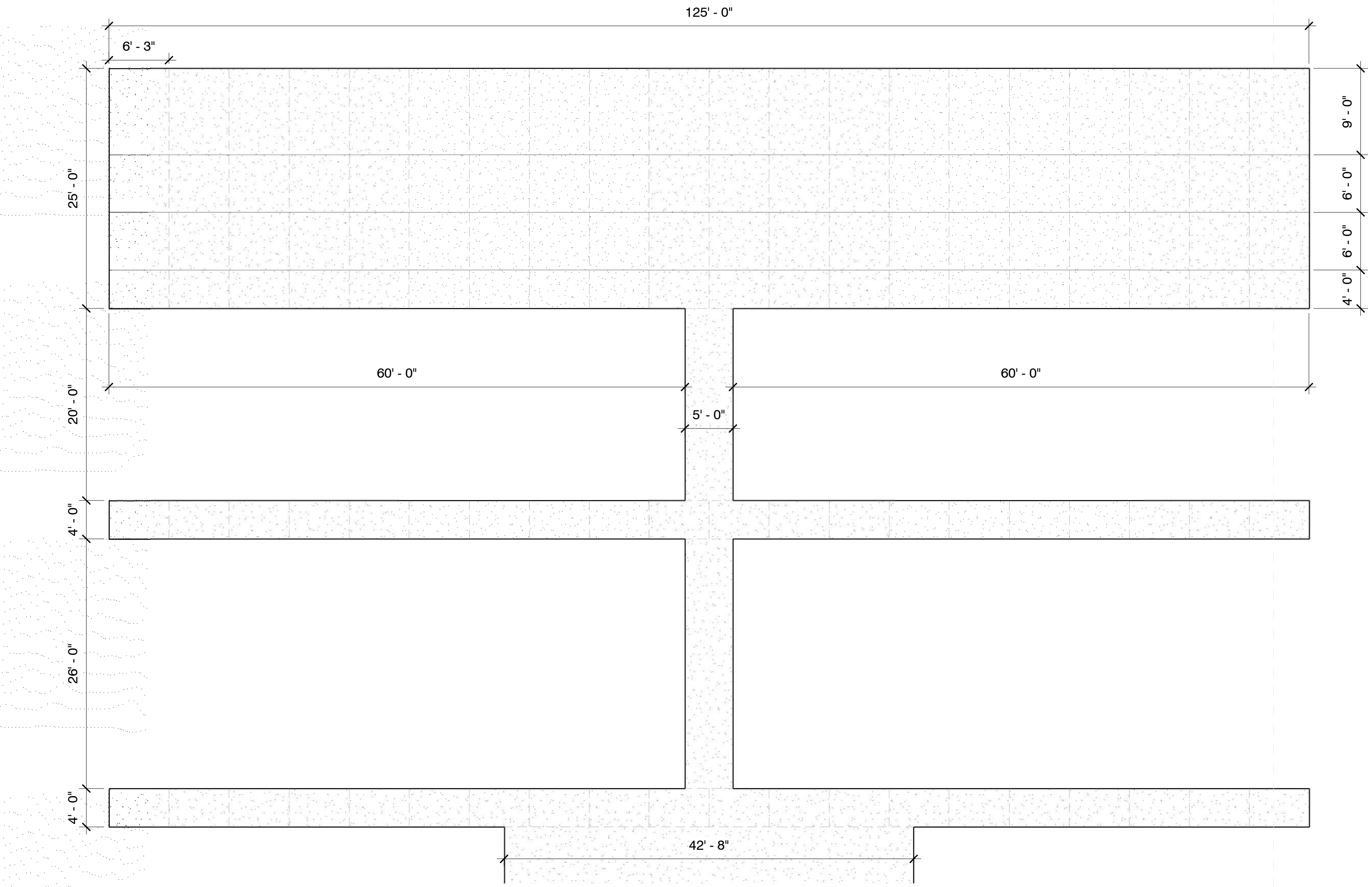
Overall Site Plan

1 Overall Site Plan

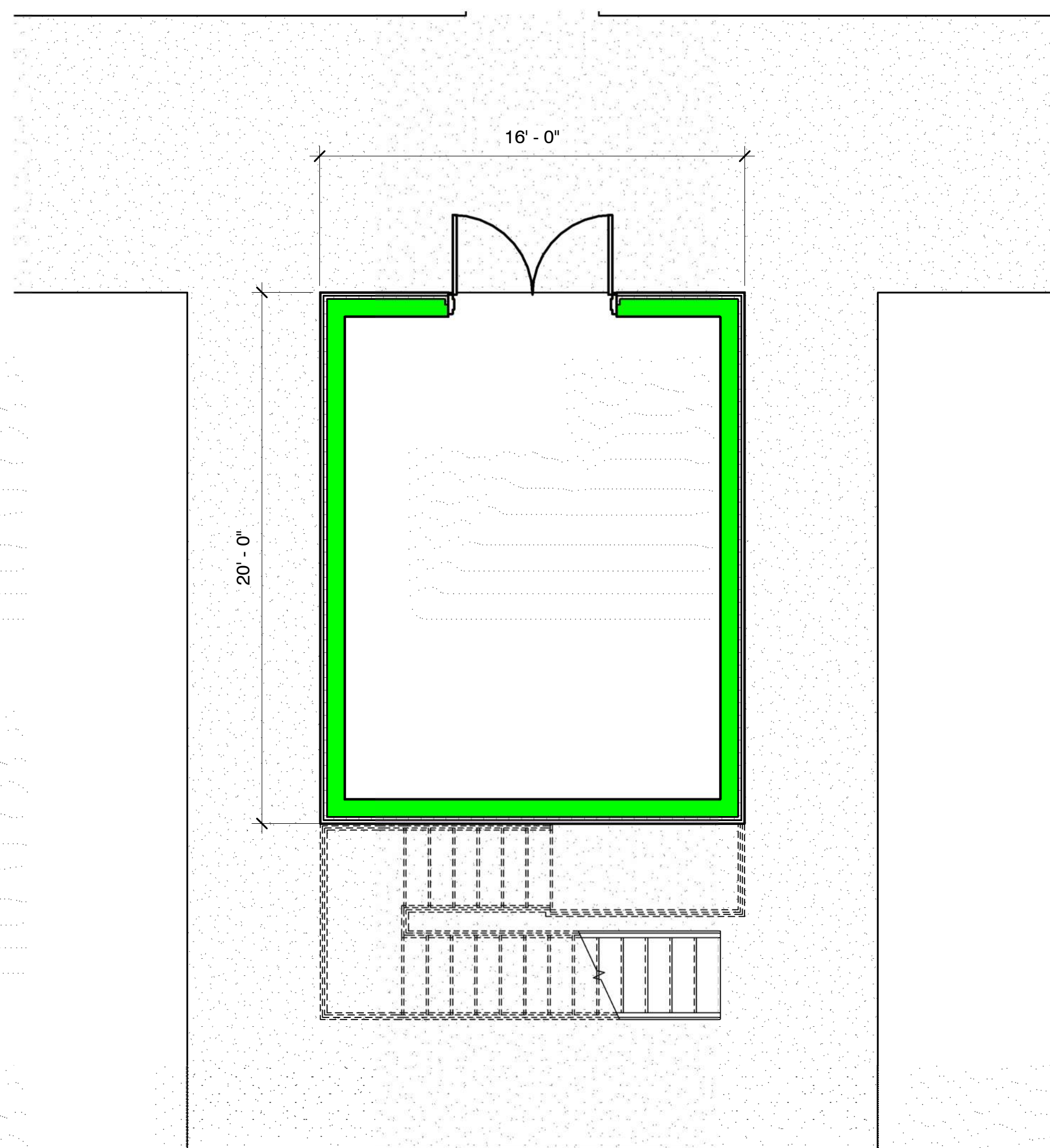
1" = 60'-0"



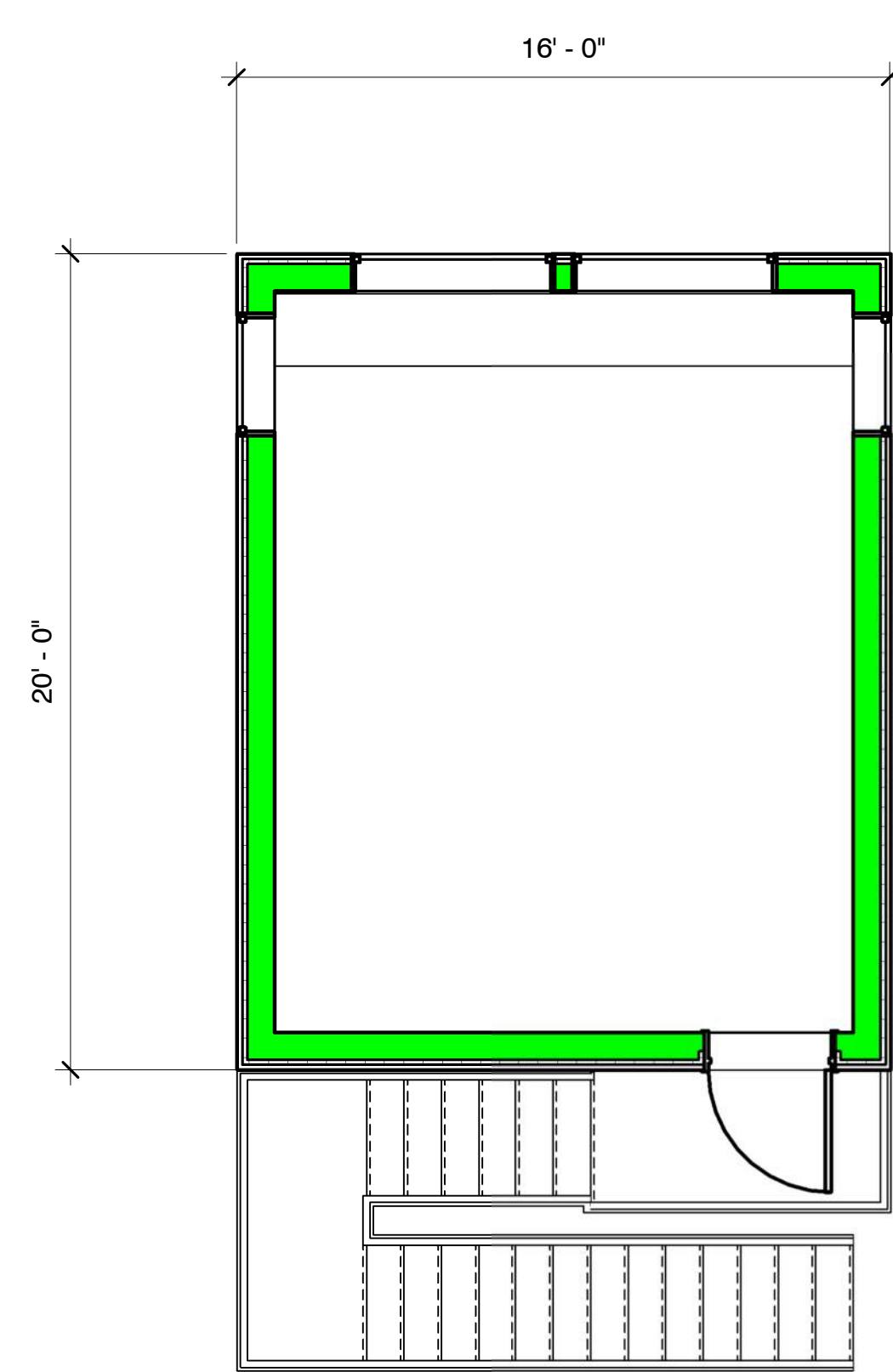
1 Enlarged Site Plan
1" = 30'-0"



2 Pistol Range Site Plan
1/8" = 1'-0"



3 Observation Tower First Floor
1/4" = 1'-0"



4 Observation Tower Second Floor
1/4" = 1'-0"